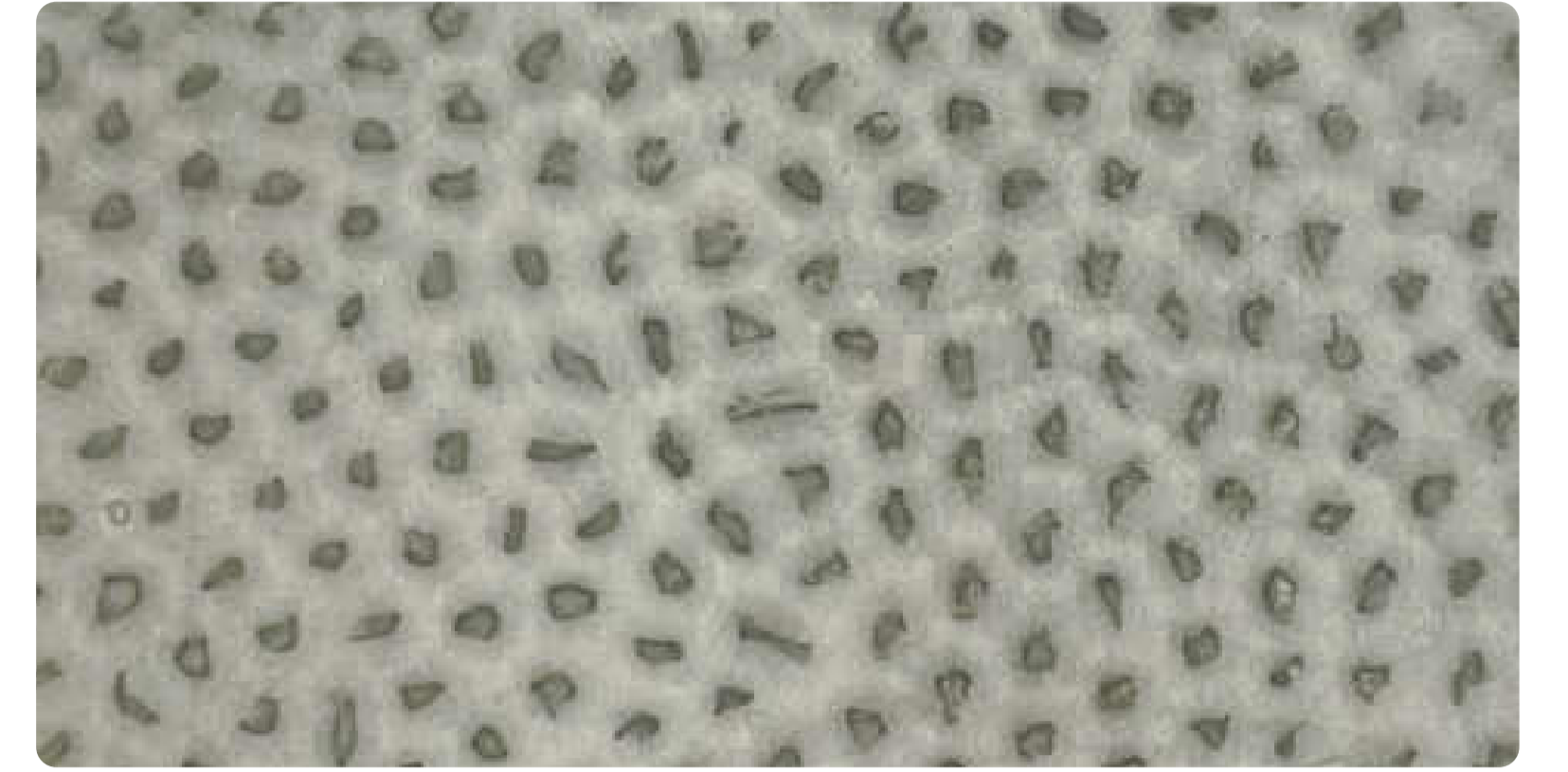


# MATERIAL TEST REPORT

<b>Finish Name</b>	<b>HAMMERED ZINC</b>
<b>Finish Code</b>	<b>ZN-05</b>
<b>Material</b>	<b>STAINLESS STEEL</b>



<b>Application</b>	<b>Indoor</b> <input checked="" type="checkbox"/>	<b>Covered Outdoor</b> <input checked="" type="checkbox"/>	<b>Exposed Outdoor</b> <input type="checkbox"/>	<b>Seaside</b> <input type="checkbox"/>
--------------------	---	--	---	---

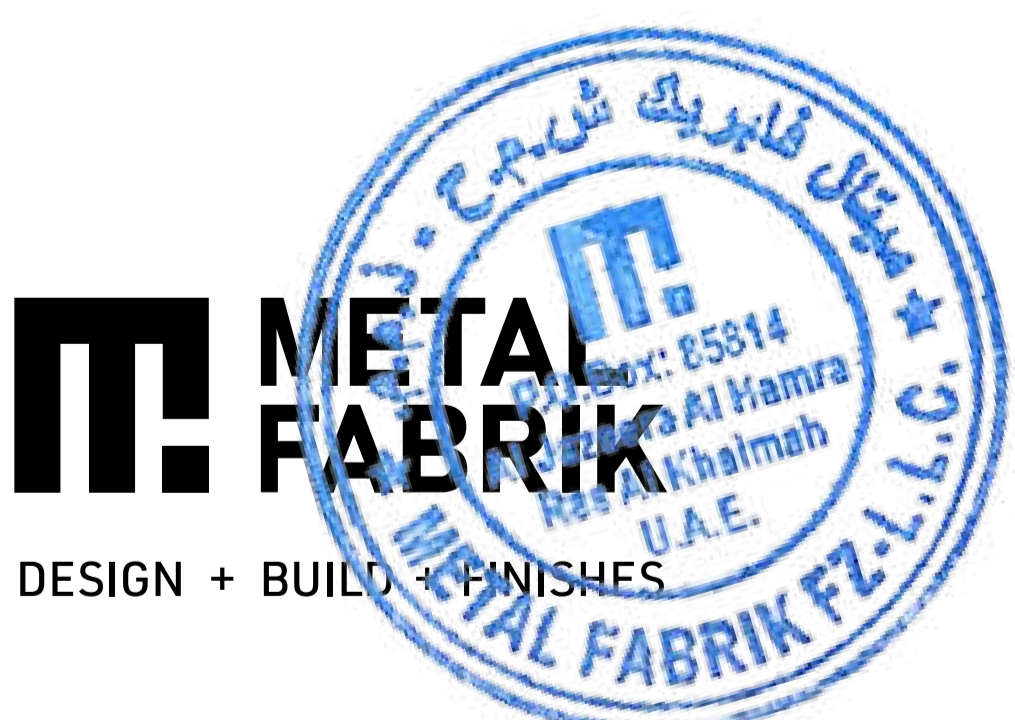
TEST	RANGE	RESULT	METHOD
<b>BOND TEST</b>	2 - 3 N/mm <sup>2</sup>	2.3	Bond strength is a measure of the adhesive strength of a coating to its substrate by adhering a metal dolly to the surface of the test panel to be tested and pulling the dolly away from the surface, perpendicular to the surface by using a pull off apparatus.
<b>SCRATCH RESISTENCE TEST</b>	1300 g - 1500 g	1700 g	Scratch test is conducted to determine the resistance of the coating to penetration by scratching with a scratch stylus loaded with 1800g of load.
<b>SALT SPRAY TEST</b>	500+	500+	Salt spray testing is an accelerated corrosion test that produces a corrosive attack to coated samples in order to evaluate the suitability of the coating when exposed to salt spray for 500 hours.
<b>WEATHER RESISTENCE TEST</b>	500+	500+	UV Resistance is a accelerated weathering test conducted on coating material to determine its ability to withstand the effect of sun light when exposed to radiation for 500 hours.

<b>Protective Coating Thickness</b>	<b>90+ Microns</b>
-------------------------------------	--------------------

## Conclusion :

Hammered Zinc finish on **STAINLESS STEEL** is suitable for **Indoor and Covered Outdoor** usage as it has passed all tests and results are within the permissible range.

## Certified By Metal Fabrik :



- Disclaimer :**
- All tests are conducted at govt. certified laboratory in the UAE on similar finishes / equivalent processes.
  - All tests are in compliance with ISO/IEC 17025 : 2007 standards to ensure quality product & testing / calibration services.
  - Color Fading - Interior 0-5% in 3years . Covered Exterior 5 - 7% in 2 years. Exposed Exterior 5 - 10% in 2 years. Seaside 5 - 15% in 2 years.

**Gallery: #S11 -111, Al Quoz Logistic Park, Al Quoz 2nd, Dubai, U.A.E.**

Factory: #A76/A89, Al Jazeera Al Hamra Free Zone, R.A.K, UAE.

Email: [contact@metalfabrik.ae](mailto:contact@metalfabrik.ae)