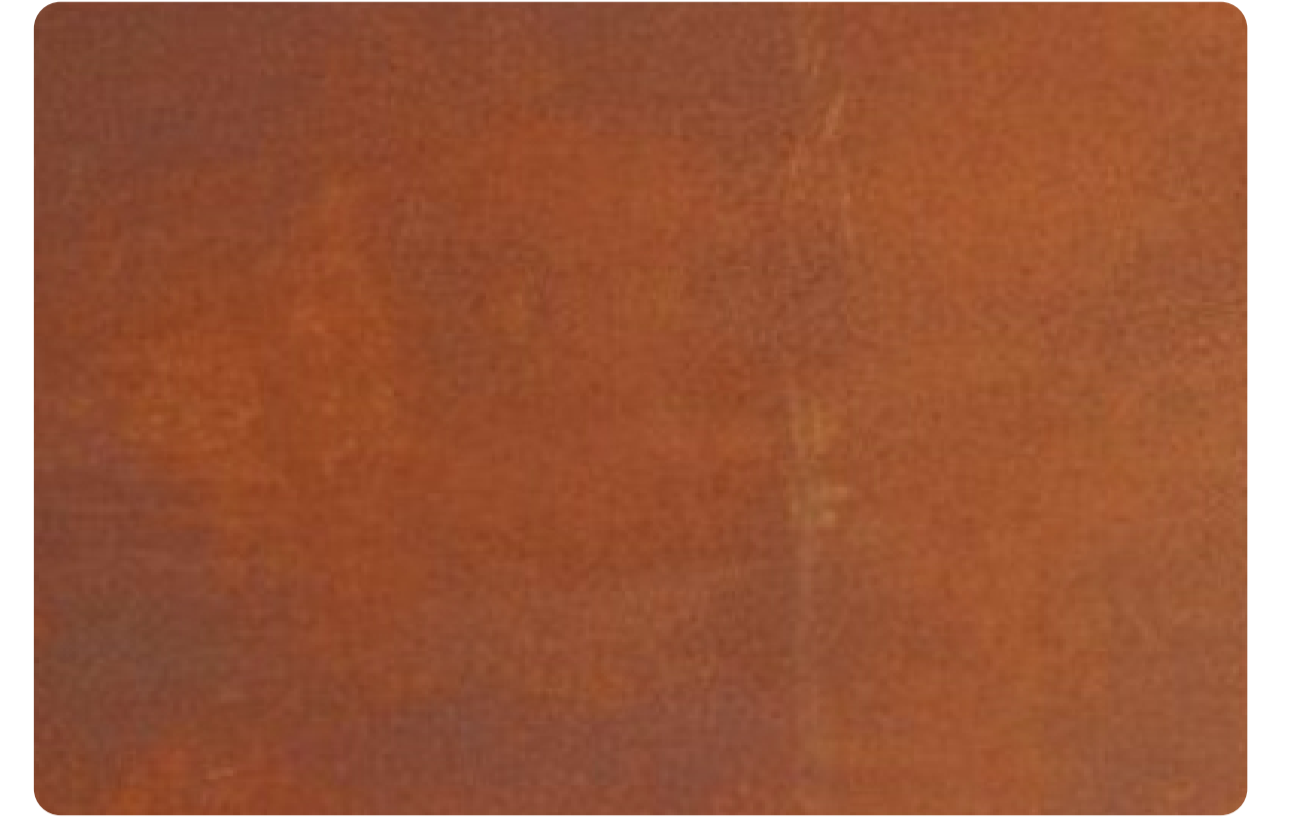


MATERIAL TEST REPORT

Finish Name	CORTEN RUST
Finish Code	M09 - CRT
Material	CORTEN STEEL



Application	Interior <input checked="" type="checkbox"/>	Covered Exterior <input checked="" type="checkbox"/>	Exposed Exterior <input checked="" type="checkbox"/>	Seaside <input type="checkbox"/>
--------------------	---	---	---	---

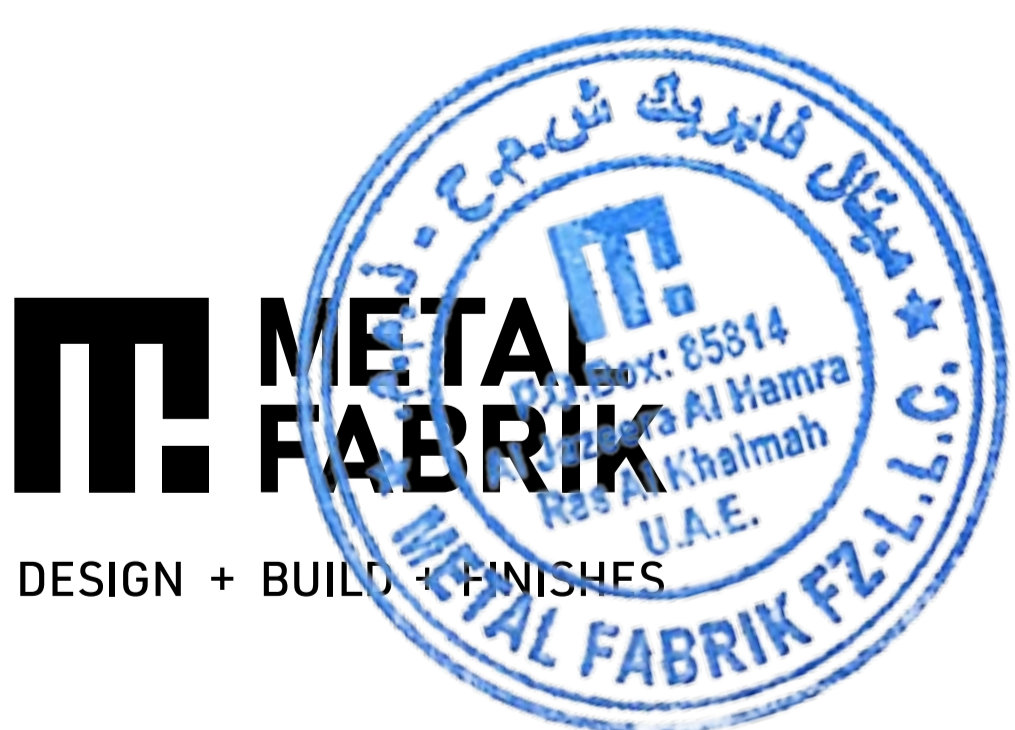
TEST	RANGE	RESULT	METHOD
BOND TEST	2 - 3 N/mm ²	2.5	Bond strength is a measure of the adhesive strength of a coating to its substrate by adhering a metal dolly to the surface of the test panel to be tested and pulling the dolly away from the surface, perpendicular to the surface by using a pull off apparatus.
SCRATCH RESISTENCE TEST	1300 g - 1500 g	1700 g	Scratch test is conducted to determine the resistance of the coating to penetration by scratching with a scratch stylus loaded with 1800g of load.
SALT SPRAY TEST	400 - 500 hours	500+	Salt spray testing is an accelerated corrosion test that produces a corrosive attack to coated samples in order to evaluate the suitability of the coating when exposed to salt spray for 500 hours.
WEATHER RESISTENCE TEST	400 - 500 hours	500+	UV Resistance is a accelerated weathering test conducted on coating material to determine its ability to withstand the effect of sun light when exposed to radiation for 500 hours.

Protective Coating Thickness	70 - 90 Microns
-------------------------------------	------------------------

Conclusion :

Corten Rust finish on **CORTEN STEEL** is suitable for **interior** and **covered exterior** usage as it has passed all tests and results are within the permissible range.

Certified By Metal Fabrik :



- Disclaimer :**
- All tests are conducted at govt. certified laboratory in the UAE on similar finishes / equivalent processes.
 - All tests are in compliance with ISO/IEC 17025 : 2007 standards to ensure quality product & testing / calibration services.
 - Color Fading - Interior 0-5% in 3years . Covered Exterior 5 - 7% in 2 years. Exposed Exterior 5 - 10% in 2 years. Seaside 5 - 15% in 2 years.

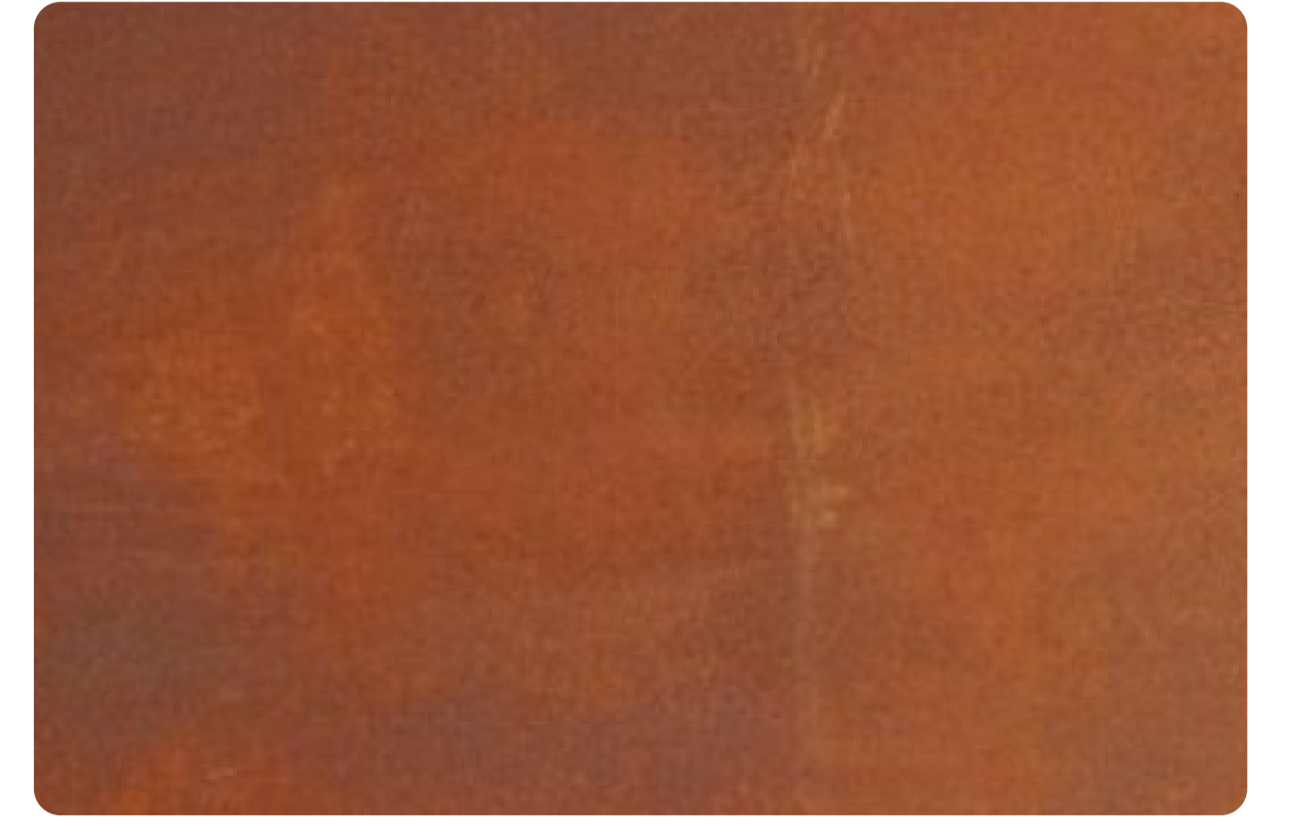
Gallery: #S11 -111, Al Quoz Logistic Park, Al Quoz 2nd, Dubai, U.A.E.

Factory: #A76/A89, Al Jazeera Al Hamra Free Zone, R.A.K, UAE.

Email: contact@metalfabrik.ae

MATERIAL TEST REPORT

Finish Name	CORTEN RUST
Finish Code	M09 - MS
Material	MILD STEEL , CR



Application	Interior <input checked="" type="checkbox"/>	Covered Exterior <input type="checkbox"/>	Exposed Exterior <input type="checkbox"/>	Seaside <input type="checkbox"/>
--------------------	---	--	--	---

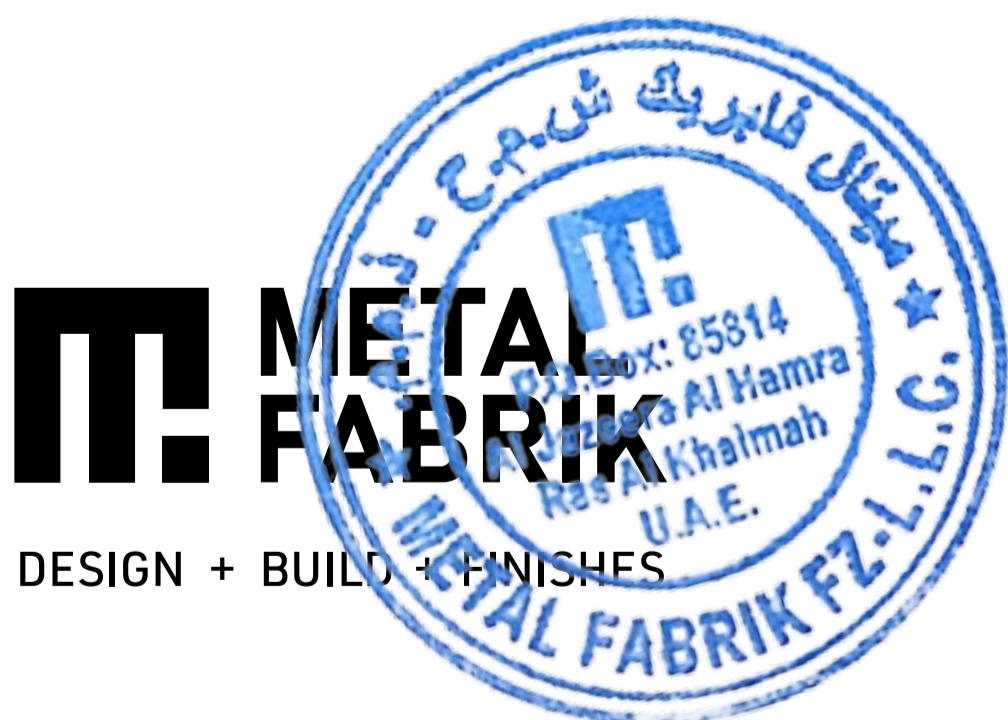
TEST	RANGE	RESULT	METHOD
BOND TEST	2 - 3 N/mm2	2.5	Bond strength is a measure of the adhesive strength of a coating to its substrate by adhering a metal dolly to the surface of the test panel to be tested and pulling the dolly away from the surface, perpendicular to the surface by using a pull off apparatus.
SCRATCH RESISTENCE TEST	1300 g - 1500 g	1700 g	Scratch test is conducted to determine the resistance of the coating to penetration by scratching with a scratch stylus loaded with 1800g of load.
SALT SPRAY TEST	200 - 300 hours	300+	Salt spray testing is an accelerated corrosion test that produces a corrosive attack to coated samples in order to evaluate the suitability of the coating when exposed to salt spray for 500 hours.
WEATHER RESISTENCE TEST	200 - 300 hours	300+	UV Resistance is a accelerated weathering test conducted on coating material to determine its ability to withstand the effect of sun light when exposed to radiation for 500 hours.

Protective Coating Thickness	40 - 60 Microns
-------------------------------------	------------------------

Conclusion :

Corten Rust finish on **MILD STEEL , CR** is suitable for **Interior** usage as it has passed all tests and results are within the permissible range.

Certified By Metal Fabrik :



- Disclaimer :**
- All tests are conducted at govt. certified laboratory in the UAE on similar finishes / equivalent processes.
 - All tests are in compliance with ISO/IEC 17025 : 2007 standards to ensure quality product & testing / calibration services.
 - Color Fading - Interior 0-5% in 3years . Covered Exterior 5 - 7% in 2 years. Exposed Exterior 5 - 10% in 2 years. Seaside 5 - 15% in 2 years.

Gallery: #S11 -111, Al Quoz Logistic Park, Al Quoz 2nd, Dubai, U.A.E.

Factory: #A76/A89, Al Jazeera Al Hamra Free Zone, R.A.K, UAE.

Email: contact@metalfabrik.ae